

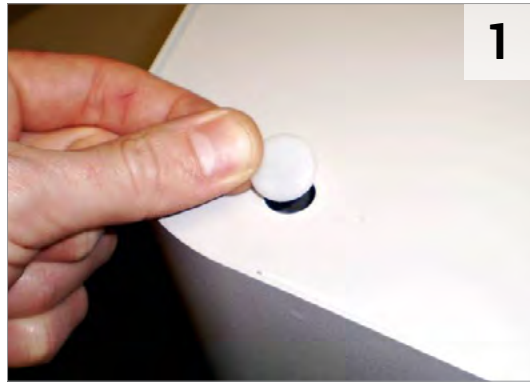


VALI instruction

REPLACEMENT OF VALI FAN



Instruction – Replacement of Vali Fan



1



Remove the L/H side cover by removing the Hole Plugs and loosening the four screws.



2

Slide the L/H side cover away from the main body ensuring that the Earth lead is disconnected.



3

Repeat the above steps and remove the R/H side cover.

(Requires Fan Replacement Kit)



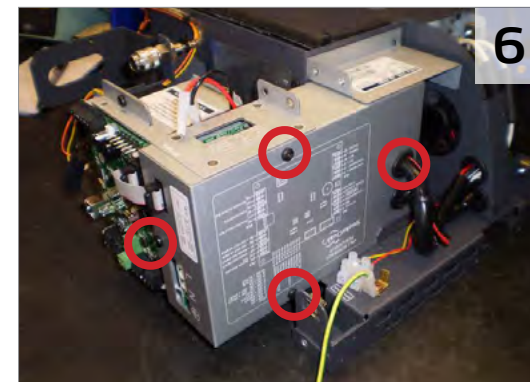
4

Remove power lead, then disconnect battery leads. Also remove Fluid Sensor and Fluid Bottle to prevent possible damage during procedure.



5

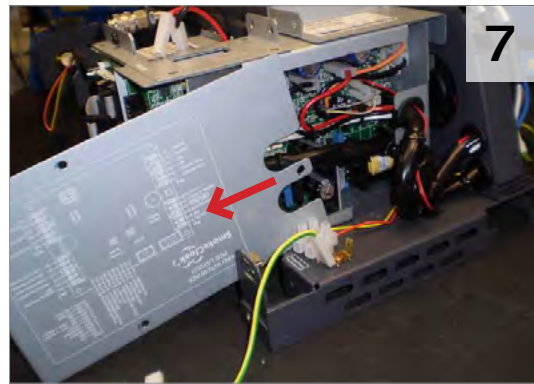
Now remove the 2 x M4x10 Black Pozzi Screws and remove the silver spacer on the electronics module as shown. This will allow you to slide the Electronics Module away from the main chassis to allow access to the screws holding the Electronics Top Cover in place.



6

Remove the 4 x M4x10 Taptites holding the electronics Top Cover in place as shown left. Then disconnect the IDC Cable and Earth Lead as shown below.

Instruction – Replacement of Vali Fan



Now slide away the Top Cover of the Electronics Module to provide access to PCB.

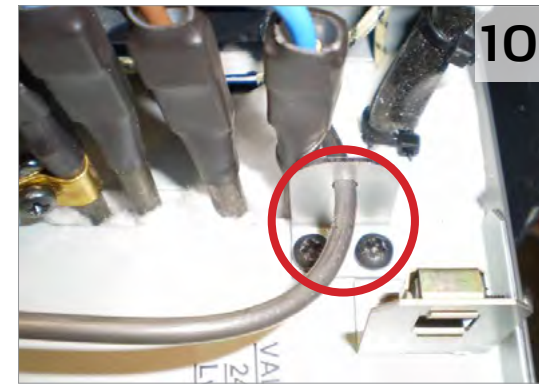


Disconnect the Fan Loom from the PCB and cut off the connector as shown below to allow easier removal. Feed through or cut any necessary cable ties to allow removal of Fan wire.



Now gently lever the fluid pipe and one-way valve out from behind the Heat Exchanger and disconnect the steel fluid pipe as shown, using a 12mm and 10mm spanner.

(Requires Fan Replacement Kit)



Now remove the 2 x M4x10 Black Taptite Screws holding the small Fluid Pipe Bracket in place as shown. This will enable you to gently manoeuvre the Fluid Pipe to provide access to the fan if necessary.



Now remove the 4 x M3 Nylocs holding the faulty Fan in place. If necessary, gently space the two upper elements of the Heat Exchanger to provide access to the upper Nyloc.



Now remove the 4 x M3 Nylocs holding the faulty Fan in place. If necessary, gently space the two upper elements of the Heat Exchanger to provide access to the upper Nyloc.

Instruction – Replacement of Vali Fan



13

Place your replacement Fan onto the mounting posts ensuring that the label on the center of the fan is facing outwards and that the wire is orientated as shown.



14

Gently feed the white Header on the end of the fan wire through the 'upper' black grommet as shown.



15

Then gently feed the white Header through the black grommet on the top of the Electronics Module as shown.

(Requires Fan Replacement Kit)



16

Now connect the Header onto the PCB as shown, ensuring that the connection is secure and covering all 3 pins.



17

Pull the excess wire through and secure neatly to main loom using cable ties. Ensure that no part of the fan wire is protruding where it may be cut or damaged when the side covers are replaced.



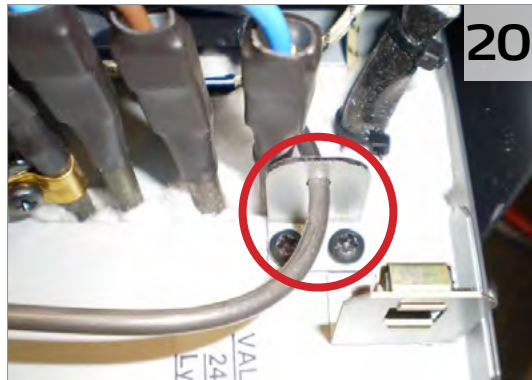
18

Now secure the replacement fan to the 4 mounting posts using the 4 x M3 Nylocs removed earlier.

Instruction – Replacement of Vali Fan



Once Fan is fitted and secure, reconnect the steel fluid pipe to the one-way valve as shown and gently re-position the fluid line back into the area behind the Heat Exchanger.

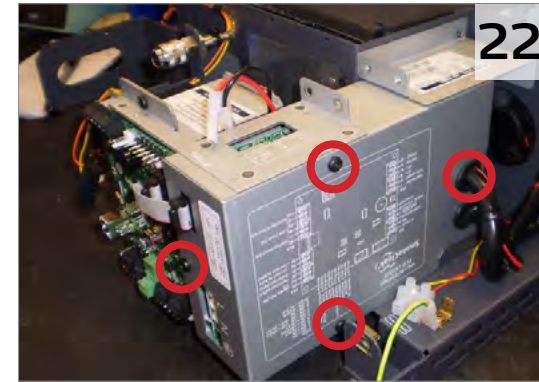


Re-attach the small metal bracket using the 2 x M4x10 Black Taptite Screws as shown.



Now replace the Top Cover onto the Electronics Module ensuring that it slides into the grooves on the black grommets on the Electronics Module.

(Requires Fan Replacement Kit)



Secure the Top Cover with the 4 x M4x10 Black Taptites removed earlier and then re-connect IDC Cable and Earth Lead as shown.

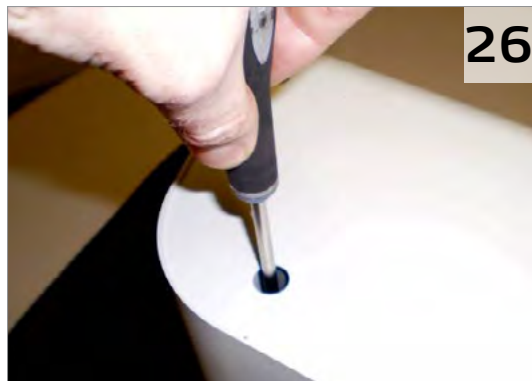


Now slide Electronics Module back into position in the chassis and secure by replacing the Silver Spacer and the 2 x M4x10 Black Pozzi Screws as shown.



Re-connect Power Lead and power up machine. Then re-connect Battery Leads and 6-Way Connector and ensure Fluid Sensor and Fluid Bottle are correctly re-connected and installed.

Instruction – Replacement of Vali Fan



Slide L/H and R/H covers back into place ensuring tabs on inside of each cover are correctly aligned with the central vertical strap. Also, ensure that the earth leads are re-connected on both covers. Finally, tighten the 4 x screws and replace the 4 x white hole plugs (L/H) and repeat for the 2 x screws/hole plugs on the R/H.

Supplier:

MSS Professional Ltd.
Rectory Court
High Street
Kislingbury
UK - Northants, NN7 4AG
Phone +44 (0) 1604 839 000
Fax +44(0) 1604 832 666
www.smokecloak.com



Contact:

MSS Professional A/S
Agerhatten 25
DK - 5220 Odense SØ
Phone +45 7217 0011
Fax +45 8617 0055